

GOVERNMENT OF NAGALAND



DEPARTMENT OF EVALUATION

RTI

DISCLOSURE

FOR

THE YEAR 2016-2017

DEPARTMENT OF EVALUATION

MANUAL-1

I. PARTICULARS OF THE ORGANISATION FUNCTIONS AND DUTIES SECTION 4(I)(B)(I) of Right to Information Act 2005).

1.HISTORY AND BACKGROUND OF THE ORGANISATION:

1.1 Set-up on 14th October 1968 as an evaluation and monitoring unit, the Evaluation Unit is a full fledged Directorate functioning under the administrative control of the Planning & Co-ordination Department, with District Evaluation Offices in Kohima, Mokokching, Mon, Phek, Tuensang, Wokha, Zunheboto, Kiphire, Longleng, Peren and Dimapur districts. The Directorate Office is located at A.G, Road, Kohima.

The Department is headed by an ex-officio Director. Till 2001, the ex-officio Director was the Development Commissioner. Since then, the Officer on Special Duty, Planning & Co-ordination Department is the ex-officio Director of the Department.

The Evaluation Directorate functions under the Administrative control of the Planning and Co-ordination Department headed by the Additional Chief Secretary and Development Commissioner. All Administrative matters and sanctions for the Directorate are routed through the administrative Department.

2. AIMS AND OBJECTIVES/ MISSION/VISIONS/KEY OBJECTIVE.

The ultimate test for any programme is in terms of final outcomes. Often this can only be determined over a period of time through Evaluation of the programme/project.

The main function of the Evaluation Department is to undertake evaluation studies on the interventions/Schemes/programmes of the Government to assess whether the programmes are impacting the targeted beneficiaries at the grass root level and to suggest ways and means to bring about improvement in their formulation and execution. Through the two aspects: retrospective and prospective and through cost-benefit analysis the evaluation studies aid decision making by providing insight into the programme.

In addition to the independent state level studies carried out by the Directorate, the District Evaluation Offices conduct District Specific Studies as per the requirement of the respective District Planning & Development Boards and as may be entrusted by the Departments. Quick review studies are also undertaken to examine whether the findings, impact and suggestions 1

Made earlier still hold true and whether any follow-up action has been taken by the Departments concerned.

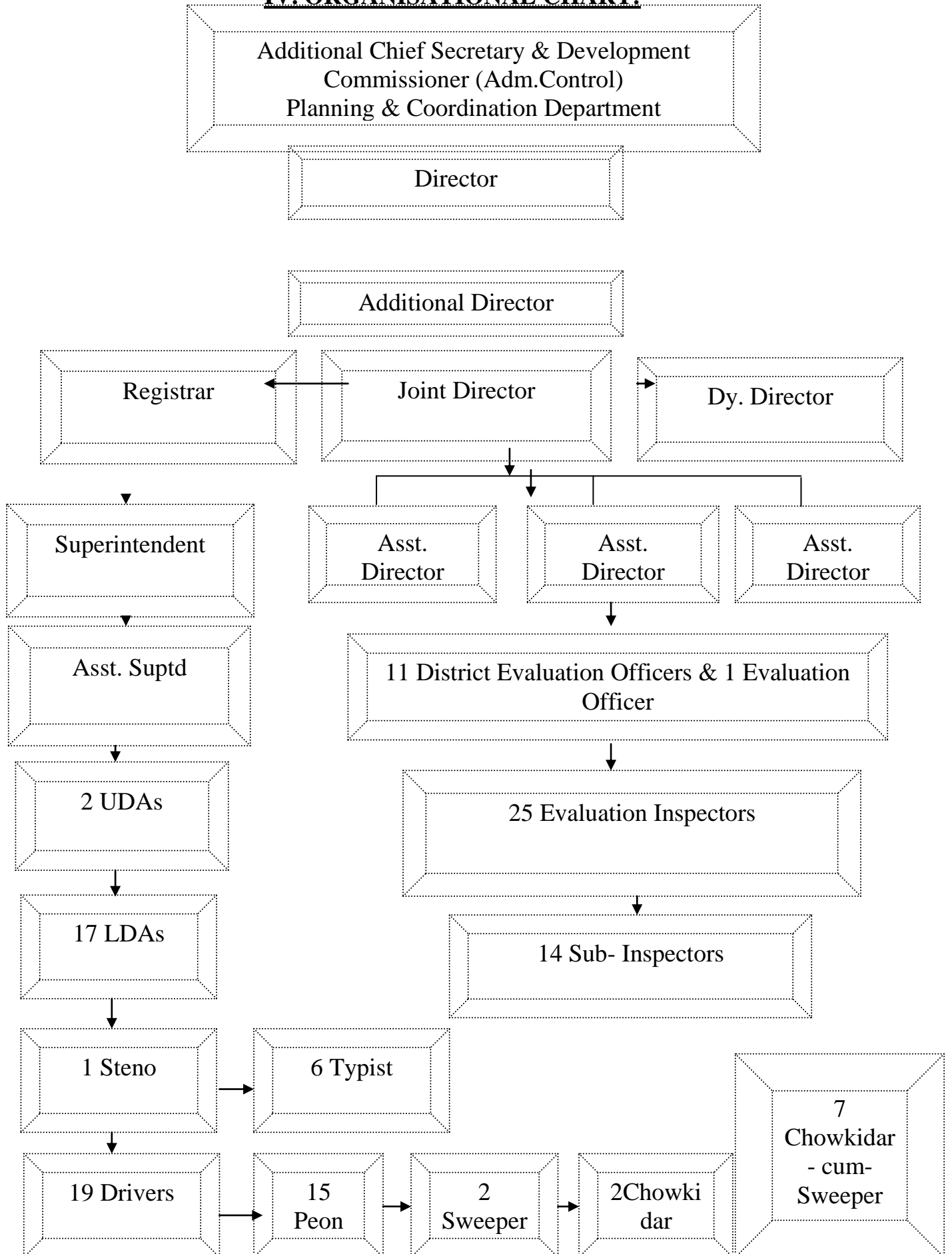
i. Technical section: The technical section comprises of one Additional Director, one Joint Director, one Deputy Director, three Assistant Directors, one Evaluation Officer, six Evaluation Inspectors and three Sub-Inspectors

ii. Establishment section: This section consist of one Registrar, one Superintendent, one Assistant Superintendent, two U.D.As, five L.D.As, one Stenographer, two Typists and other ministerial staff.

III. ADMINISTRATIVE SETUP IN THE DISTRICTS.

District Evaluation Offices: There are eleven District Evaluation Officers (DEO) in each of the eleven District Evaluation Offices at Kohima, Wokha, Mokokchung, Tuensang, Mon, Zunheboto, Phek, Longleng, Kiphire, Peren and Dimapur. Each District Office has staff strength of one DEO, two Evaluation Inspectors, one Sub-Inspector, one L.D.A, one Typist and two Grade IV employees.

IV. ORGANISATIONAL CHART:



| <i>Sl.no</i> | <i>Name</i> | <i>Designation</i> | <i>Contact Details.</i> |
|--------------|---------------------|--------------------------|---------------------------|
| 1 | 2 | 3 | 4 |
| 1 | Shinito sema | Additional Director | 9436243219 |
| 2 | H. Hugie Zeliang | Joint Director | 9436076868 |
| 3 | I.Sentinuklu Jamir | Assistant Director | 9436655191 |
| 4 | D.Disuang Zeme | Assistant Director | 9615777751 |
| 5 | B.Rendysowa Ao | Assistant Director | 9436403174 |
| 6 | Paunamheing | Evaluation Officer | 9436000968 |
| 7 | P.Toshimenla | Evaluation Inspector | 9862031534 |
| 8 | M .Panger Aier | Evaluation Inspector | 9436820064 |
| 9 | Sanuo | Evaluation Inspector | 9774034113 |
| 10 | Avo Rhakho | Evaluation Inspector | 9612173722 |
| 11 | Khrienguü Thevo | Evaluation Inspector | 9856850137 |
| 12 | Avino Yashu | Evaluation Inspector | 9615388871 |
| 13 | Vikehienuo Zhasa | Evaluation Inspector | 8014945978 |
| 14 | Neithozelhou | Sub- Inspector | 9856850018 |
| 15 | C. Narola Jamir | Sub- Inspector | 9862851423 |
| 16 | Imtitoshi Longkumer | Registrar | 9436614310 |
| 17 | V.Maria Kiso | Assistant Superintendent | 9615876548 |
| 18 | Ziuyisi chuilo | UDA | 9856900780 |
| 19 | Twambe Zeliang | UDA | 8730085022 |
| 20 | Pukhaxu Jhimo | LDA | 9436601375 |
| 21 | Atsang Sangtam | LDA | 9436071237 |
| 22 | Temjenlemla Aier | LDA | 9436401933 |
| 23 | Kangzang | LDA | 9862528171 |
| 24 | Khrolo Kronu | LDA | 9612176337 |
| 25 | Moanaro Jamir | LDA | Directorate of Evaluation |
| 26 | Kawakami Sentila | Stenographer | 9856771033 |
| 27 | Shiholi | Typist | 9436000835 |
| 28 | Subenthung Lotha | Driver | 9612990828 |
| 29 | Kalu Bahadur | Driver | 9774408604 |
| 30 | Meyajalie Khate | Driver | 8014057262 |
| 31 | Gemdaulie | Peon | Directorate of Evaluation |
| 32 | Asaplie | Peon | 7085994953 |
| 33 | Mhasiriezo Kire | Peon | 9856294659 |
| 34 | Iramteing Hegwang | Peon | 9774717465 |
| 35 | Vitsonuo Kire | Sweeper | 9856070468 |
| 36 | Kezhawelie Leno | Chowkidar | Directorate of Evaluation |

| | | | |
|----|---------------------------|-----------------------------|---|
| 37 | Veyekro Venuh | Driver | 9615936518 |
| 38 | Vehukho Thingo | Driver | 8729923537 |
| 39 | Kughaho Zhimomi | Driver | 9089586110 |
| 40 | Yangtan Yimchunger | Driver | 8575723938 |
| 41 | Visheto Sumi | Driver | 9402079505 |
| 42 | Bendangsunep Aier | Driver | 9774822483 |
| 43 | Welhite Sarah | Driver | Directorate of Evaluation |
| 44 | Veshietso Kotso | District Evaluation Officer | 9436810664 |
| 45 | Chubazulu | Evaluation Inspector | 9436605029 |
| 46 | Nungsangtula Longkumer | Evaluation Inspector | 9436062631 |
| 47 | Pithungo Ngullie | Sub- Inspector | 8575814007 |
| 48 | Khrienuo Purakhu | LDA | 9862997033 |
| 49 | Lungdaihingle Haikam | Typist | 9862110028 |
| 50 | Athia Yiese | Peon | District Evaluation Office, Kohima. |
| 51 | L.Kath | Chowkidar-cum Sweeper | District Evaluation Office, Kohima. |
| 52 | Thupuhuzo Lupo-o | Driver | District Evaluation Office, Kohima. |
| 53 | H.Reyove Epao | District Evaluation Officer | 9436063974 |
| 54 | T.Zulutemjen Ao | Evaluation Inspector | 9436072189 |
| 55 | Setsovinuo Solo | Evaluation Inspector | 9436001683 |
| 56 | Pretso Mero | Sub- Inspector | District Evaluation Office, Dimapur |
| 57 | I.Akala Ao | LDA | 9402488012 |
| 58 | Achuile Zeliang | Typist | 9436828130 |
| 59 | Subenthung Lotha | Driver | 9612990828 |
| 60 | Nokching Nyaku | Chowkidar | 9436071657 |
| 61 | Rechael Chang | Sweeper | 8415015581 |
| 62 | Phongyei Phom | Peon | 9612622657 |
| 63 | M.Watisangla Ao | District Evaluation Officer | 8974324527 |
| 64 | Mayangchala | Evaluation Inspector | 9436205844 |
| 65 | Imkongmeren | Evaluation Inspector | 9856511066 |
| 66 | Senti Jamir | Sub- Inspector | 9856275556 |
| 67 | B. Toshirenla | LDA | 961247782 |
| 68 | T. alemchila Jamir | Typist | 9862141828 |
| 69 | Imolangla | Chowkidar-cum Sweeper | 9862611117 |
| 70 | John Pongen | Driver | District Evaluation Office, Mokokchung |

| | | | |
|-----|----------------------|-----------------------------|---------------------------------------|
| 71 | K.Etssorhomo lotha | District Evaluation Officer | 9436400539 |
| 72 | M.C. Namti Newmai | Evaluation Inspector | 9612927387 |
| 73 | Nukshijungla | Evaluation Inspector | 9856535347 |
| 74 | Rhondeno Ovung | Sub- Inspector | 8132033955 |
| 75 | Nzanthung Ngullie | LDA | 8730067419 |
| 76 | Aseni Humtsoe | LDA | District Evaluation Office, Wokha |
| 77 | Nyimtsemo Lotha | Peon | 9089192252 |
| 78 | Nzanbeni Odyuo | Chowkidar-cum Sweeper | 9612872730 |
| 79 | Ngonuzo Chuzho | Driver | 9402809312 |
| 80 | G.Hekuto Sema | District Evaluation Officer | 9436010902 |
| 81 | Sukheamew Yimchunger | Evaluation Inspector | 9615961938 |
| 82 | Narola Rentta | Evaluation Inspector | 9436004839 |
| 83 | Masangum | Sub- Inspector | 9402696630 |
| 84 | Yethoshe Tsuipu | LDA | 9856301135 |
| 85 | T.Hokishe Zhimomi | Peon | 8575752834 |
| 86 | Khighovi Sema | Chowkidar-cum Sweeper | 8974471766 |
| 87 | Vinoka | Driver | District Evaluation Office, Zunheboto |
| 88 | Sevolhu Nyekha | District Evaluation Officer | 9436612435 |
| 89 | Zulhunu | Evaluation Inspector | 9402820720 |
| 90 | Zajamo kikon | Evaluation Inspector | 9612361689 |
| 91 | Kevimhietuoü Sorhie | Sub- Inspector | 9856300924 |
| 92 | Phiveo Venyo | LDA | 9402006187 |
| 93 | Motsolo | Peon | District Evaluation Office, Phek |
| 94 | Vetsütolu | Chowkidar-cum Sweeper | 9612202322 |
| 95 | KhroweloKhape | Driver | District Evaluation Office, Phek |
| 96 | Sepozo Phesao | District Evaluation Officer | 9856439343 |
| 97 | Emkong Tonger | Evaluation Inspector | 8974918438 |
| 98 | Shenwang Konyak | Evaluation Inspector | 9612669522 |
| 99 | B. Khamlep | Sub- Inspector | 9612581404 |
| 100 | N.John konyak | LDA | 9615778345 |
| 101 | Ngonyeih Konyak | Typist | 8731900941 |

| | | | |
|-----|-------------------------|-----------------------------|------------|
| 102 | H.Puyong Konyak | Peon | 9436265143 |
| 103 | T.Yiangpong Konyak | Chowkidar-cum Sweeper | |
| 104 | Shellem | District Evaluation Officer | 9774637065 |
| 105 | Dieselhoulie Angami | Evaluation Inspector | 8575090448 |
| 106 | Tsathrongse Sangtam | Evaluation Inspector | 9612605482 |
| 107 | Issac Tikhir | Sub- Inspector | 9612517172 |
| 108 | Chopongse Sangtam | LDA | 9862555917 |
| 109 | L.Yingjai Phom | Typist | 8732088325 |
| 110 | Murekiu Yimchunger | Peon | 9862676178 |
| 111 | Hampu Yimchunger | Chowkidar-cum Sweeper | 9436210123 |
| 112 | Erangnimbe Thou | District Evaluation Officer | 8974324527 |
| 114 | Khehoshe Shohe | Evaluation Inspector | 9436267151 |
| 113 | Azuipei Lungalang | Sub- Inspector | 8731953876 |
| 115 | Sekhozo Kezo | LDA | 8729922457 |
| 116 | Raigong | Peon | 9436686088 |
| 117 | Ipeidang Hega | Driver | 9402747559 |
| 118 | A.Anden Moklong | District Evaluation Officer | 6436673081 |
| 119 | Temsuyanger Longkumer | Evaluation Inspector | 8414092811 |
| 120 | Imtilepden Jamir | Sub- Inspector | 9615848175 |
| 121 | T.Nungasangmeren Jamir | LDA | 9862021950 |
| 122 | Suiheulungbe | Peon | 8575925445 |
| 123 | Setingkyu Sangtam | Driver | 8730053715 |
| 124 | Z.Renchamo Odyuo | District Evaluation Officer | 9862134939 |
| 125 | S.Khoheshe Jakha | Evaluation Inspector | 9402434360 |
| 126 | H.Shokheamba Yimchunger | Sub- Inspector | 9862006644 |
| 127 | S.Yangliseshi Sangtam | LDA | 9862672088 |
| 128 | Chineo Lotha | Driver | 9862826525 |
| 129 | Hothrise Sangtam | Peon | 9862105739 |
| 130 | Kikashe | Driver | |

V.FUNCTION AND DUTIES, RESPONSIBILITIES OF OFFICERS AS PER DIAGRAM OVERLEAF.

1. The main functions of the Evaluation Directorate is to undertake independent unbiased Evaluation studies of the various schemes/ intervention programmes of the Government and to suggest ways and means to bring about improvement in their formulation and execution. Through the two aspects (i) retrospective- assessment of the achievements of the programmes and (ii) prospective - what should be done to improve the programmes and through cost benefits analysis the Evaluation studies aid decision making and provide insight into the programmes. The function of the Department is to make recommendation to the Government through its reports to aid the planning process.
2. The independent state level studies are carried out after obtaining approval of Steering Committee. In addition the District Evaluation Offices conduct district specific studies as per the requirement of the respective District Planning and Development Board (DPDB) and as may be entrusted by the Departments. The studies are carried out after obtaining the approval of DPDB.
3. A total of 57 Evaluation studies/ reports have been published by the Department of Evaluation Directorate so far.

MANUAL-II

II. POWERS AND DUTIES OF THE OFFICERS AND EMPLOYEES SECTION 4(I)(B)(II) Right to Information Act 2005).

The officers and staff of the Directorate are assigned specific responsibilities to ensure smooth functioning.

I. Allotment of work for Grade 'A' Officers.

- A. **Director-** Overall in charge
- B. **Shri.Shinito Sema, Additional Director.**
 1. Creation of posts.
 2. Matters relating to appointment/promotion/confirmation/transfer/posting of officers and staff including contingency.
 3. Distribution of work.
 4. APAR and correspondence thereon.
 5. All personal files and matters relating to leave, service books, accounts etc.
 6. Maintenance of attendance register for establishment/technical/officers.
 7. Overall guidance in research work.
 8. Monitoring/supervision of evaluation studies.
 9. Matter relating to state level studies(SLS)

10. Engagement of consultancy/research institute.
11. To act as DDO in r/o directorate of evaluation.
12. Purchase/repair of computer machine/Photostat machine/ updation of website.
13. Stationeries/maintenance of stock register/procurement of printed forms/rubber stamps etc.
14. Court case
15. Budget
16. Annual Plan and five years plan.
17. Quarterly meetings with staff/others.
18. Any other matter that may be allotted to her from time to time.

C Shri. H.Hugie Zeliang, Joint Director

1. Monthly expenditure and reconciliation thereof with AG/Treasury/GPF/GIS
2. Audit note/objection.
3. APAR.
4. Undertake/independent studies/review evaluation studies as a team leader for Team- 1
5. Matter relating to district specific studies(DSS)
6. Publication
7. Review studies
8. Any matter that may be allotted to him from time to time.
9. Maintenance of staff bus.
10. Motor Vehicle purchase/repair & maintenance/condemnation.
11. All personal files.

D. Shri. I.Sentinuklu Jamir, Assistant Director

- (i) Annual Administrative Report.
- (ii) Training/capacity building of officers/staff/preparation of calendar of training.
- (iii) Strengthening of district evaluation offices.
- (iv) APAR.
- (v) Construction/repair of office building/staff quarter.
- (vi) Maintenance of record of property, obtaining of land patta/ allotment of quarter.
- (vii) Monitoring of 15 Point Programme and 20 Point Programme.
- (viii) Undertake and monitor/supervise evaluation studies as per the allotment of the districts. As team leader for Team-2
- (ix) Updating Website
- (x) Budget Plan/non-Plan.

E. Shri. D.Disuang Zeme, Assistant Director

1. Meeting minutes of DP&DB
2. Disaster preparedness programme
3. Acknowledgement
4. APAR
5. Purchase of Books and maintenance of Library.
6. Cadre review/service matters.
7. Rent,Rate and Taxes.
8. Library.
9. Undertake and monitor/supervise evaluation studies, district specific studies as per the allotment of districts as team leader for Team-3
10. Monitoring of 15 Point Programme and 20 Point Programme.

F. Shri.Rendysowa Ao Assistant Director.

1. Medical Re-imburement/Advance
2. Gender Budgeting
3. Maintenance of conference room.
4. Monitoring of 15 Point Programme and 20 Point Programme.
5. Matter relating to State Level Studies.
6. Cadre ReviewSupervision of Works of Sweeper/Peon.
7. Purchase of books periodical/maps etc.

G. Smti.Nungsangtula, Evaluation Officer.

1. Matters relating to monitor/supervise Evaluation studies as per the allotment of the . Districts.
2. Maintenance of Library.
3. Supervision of Technical branch
4. To assist relating district specific studies.

Files pertaining to technical matters/subjects will be initiated by the Sub-Inspectors to the respective Inspectors as per the assignment, who would in turn route it to the respective supervisory officer (Team leader). All the files will be routed through the Jopint Director to the Director. All establishment files will be routed through the Registrar who in turn will put up to the Joint Director who will then put up to Director.

All correspondences to be circulated outside the office will be issued with the approval/signature of Director.

A. Shri. Imtitoshi, Registrar

1. Annual Plan & Five Year Plan
2. Budget Plan & Non Plan.
3. Checking of all pay bills/ T.A/ MR bills and other bills of both Gazetted & Non Gazetted.
4. Audit Notes/Objection/ PAC reply/ROP fixation of pay.
5. Matters pertaining to delegations of financial powers.
6. DDO wise allocation/LPC.
7. Purchase of stationery/ maintenance of stock register.
8. Reconciliation with A.G/Treasury.
9. Maintenance of guard file/all circular (He has to maintain a register for all types of order year wise)

C. Smti. Maria, Assistant Superintendent.

1. Creation of posts and continuation of posts.
2. Maintenance of Service Books and records.
3. Children education allowance/TA
4. Purchase of service postage stamps and maintenance & Accounts.
5. Advance of motor car/HBA and personal loan
6. Maintenance and updating of APAR both Directorate and Distrcict.

B. Shri. Twambe, UDA

1. Budget Plan & Non Plan.
2. Modified Assured Carrer Progression
3. Preparation of Pension Papers/Leave encashment/Leave admissibility.
4. Motor Vehicles/Tyres, Maintenance and condemnation of Vehicles.
5. Accomodation/buildings of officers/staff/land/land patta/house rent of DEO.

D. Smti. Zuiyisi, UDA

1. Medical re-imbusement / advance
2. Updation of all personal files/updating of service book
3. Seniority List
4. Supervision of works of Sweepers/Peons
5. Global climate change
6. Maintenance of earned leave/casual leave/restricted leave.
7. Maintenance of I.D.card.
- 7 .Housing loan/ Personal loan/ Car/Scooter advance.
8. Telephone bills/Electricity bills.
9. Differently abled programmes.

E. Shri. Pukhaxu, LDA

- (i) Handling of cash/maintenance of cash books
- (ii) Presenting of all bills to Treasury.
- (iii) Maintenance of monthly expenditure figures of Directorate/Districts and submit the report by 10th of every month positively.
- (iv) Maintenance of Monthly progress report.
- (v) Re-conciliation with A.G.
- (vi) Maintenance of electricity /Telephone/Water bill.

F. Smti. Temjenlemla, LDA

1. Appointment/transfer/promotion of officers/staff/requisition of posts.
2. Audit notes/ objections- reply thereof
3. Confirmation/ Medical Examination for permanency
4. Submission of Return to Employment Exchange.
5. Disaster Management
6. R.T.I

G. Shri. Atsang, LDA- Nodal Officer

1. Nodal officer
2. Gender budgeting
3. Assembly Question
4. T.A.bills
5. All matters relating to authentication with Treasuries and Accounts.
6. New Pension Scheme

H. Shri. Kangzang, LDA-Cum-Computer Assistant

1. Preparation of Pay bills including arrear bills and other bills
2. Grant of DA/ADA/Annual increment.

I. Shri.Khrolo L.D.A

1. Maintenance of stock registers for stationery, furniture computer/other electronic
2. Maintenance of computer
3. Issue of LPC
4. Maintenance of grade IV GPF and collection of annual statement from A.G.
5. Withdrawal of GPF.

J. Kumari. Moanaro Jamir LDA

- i. Receipt, issue & dispatch.

K. Smti. Shiholi, Typist (Sr. Grade)

Attached to Deputy Director. Typing both Technical & Establishment works/File movement record.

L. Smti. Kawakami Sentila, Steno

- i. Attached to Director/ Maintenance of Dak/ File movement record/ typing works of technical department and typing works as assigned. When Director is not in office she will attend the works of Additional Director.
- ii. Maintenance of APAR/ACR dossier of Non-Gazetted officers.

M. Handling of Zerox machine:

Shri. Kangzang LDA and Miss Asaplie Peon for which permission will be sought from Joint Director.

N. Smt. Gemdaule, Peon will be attached to Director/office.

O. Miss Asaplie, Peon will be attached to Joint Director/ in the office.

P. Shri.Mhasirezo, Peon will be attached with Accounts branch.

Q. Shri. Iramteing Hegwang, Peon- Dak duty and attached to office.

MANUAL-III

III. PROCEDURE FOLLOWED IN DECISION MAKING SECTION 4(1) (B) (III) of Right to Information Act 2005).

1. The Directorate of Evaluation functions under the administrative control of the Planning & Co-ordination Department. All the major decisions, appointments, allocation of budget, sanction, promotion etc are made with the approval of the administrative Department. After formulation of the plan proposal at the Directorate level the same is forwarded to the Planning & Co-ordination Department for approval. Decision pertaining to Evaluation studies is taken with the approval of the Steering Committee which consists of:

- i) Development Commissioner : Chairman
- ii) Secretary Finance Department : Member
- iii) Joint Secretary P & AR Department : Member
- iv) Vigilance Commissioner : Member
- v.) Principal/Commissioner & Secy /Secy and Head of the Department whose Scheme/report is under study : Co-opted Member
- vi) OSD, Planning : Member
- vii) Joint Director/Director of Evaluation : Member Secretary.

2. The Steering Committee decides the schemes for which Evaluation studies are to be undertaken and guide/directs the Directorate on the approach, methodology etc to be adopted for the study. On completion of the study the Committee scrutinizes and approves the reports before publication. The committee also assesses the follow up action taken by the Government as suggested/ recommended in the Evaluation reports.

3. At the Directorate level all decisions pertaining to service matters of the employees under the establishment of the Evaluation Directorate, all administrative matters, research/ technical works and financial matters are taken with the approval of the Director.

4. The Director / Additional Director supervise all activities in the Department. All files, proposals over technical/research work and establishments / administrative matters are routed through him.

5. The Additional Director/ Joint Director is the designated DDO. Hence all financial matters, sanction and drawal of funds are under her preview. She also supervises/guides assigned the technical work of technical staff as well as establishment matters.

6. Deputy Director/Assistant Directors formulates the action plan for the Evaluation studies to be undertaken. The officers are responsible for writing the draft report as per the

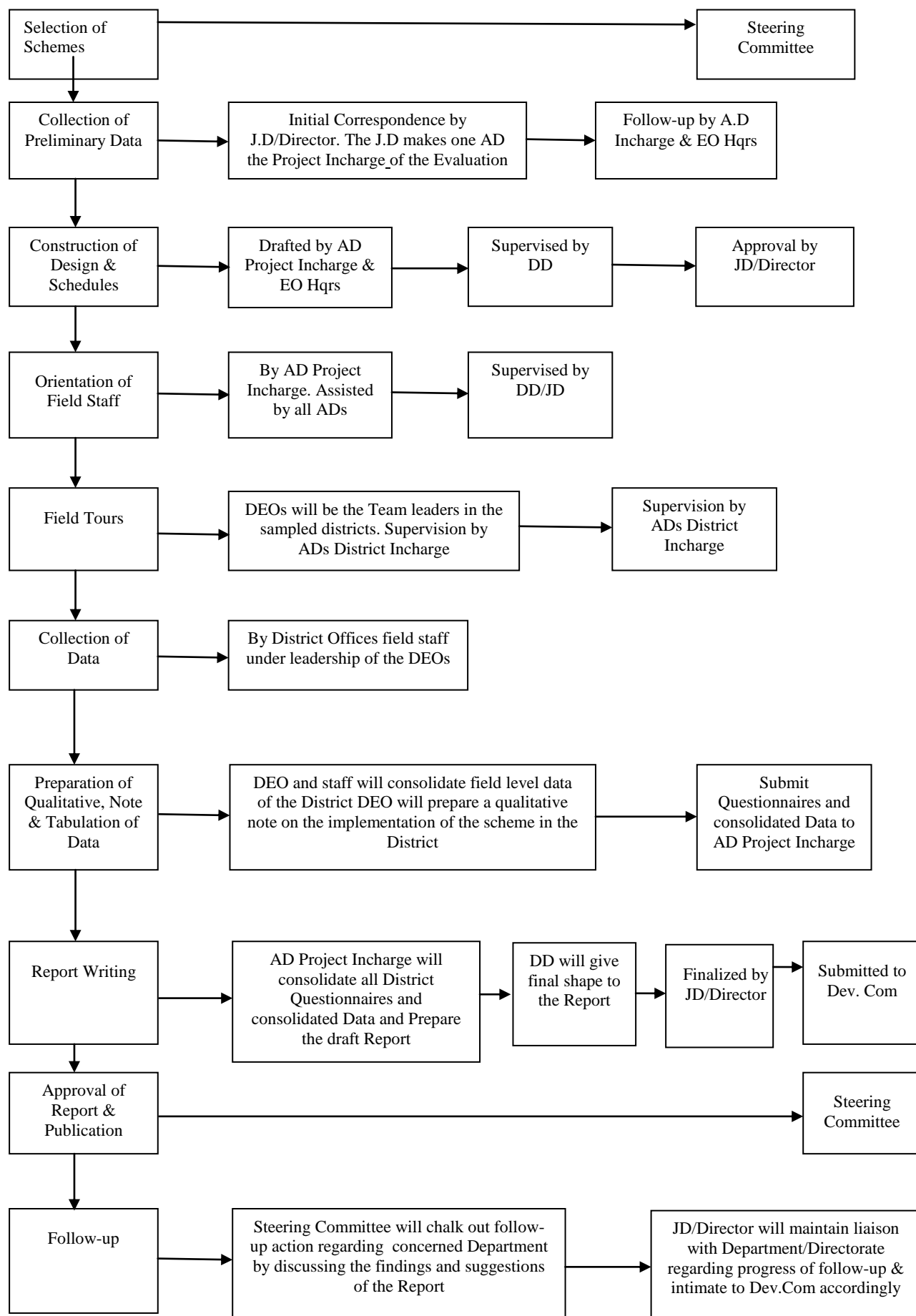
data collected by the field officers and inspectors. Chalking out the calendar of training programmes for the officers and staff of the Department is also the responsibility of the Assistant Directors. The officer has the prerogative to decide the kind of training, the subject etc to be imparted. The maintenance and the updation of the Library is also the responsibility of Assistant Directors.

7. Evaluation officers are the base officers for proposing studies to be taken up. They are responsible for framing the schedule and leading the team to conduct the survey. On completion of the field work, the submission of the draft report is also the responsibility of the Evaluation Officer. As head of the district office, all establishment and administrative matters in the district are dealt by the DEO.

8. Sub-Inspectors are responsible for tabulation and compilation and analysis of data.

Manual-IV

IV. THE NORMS SET BY IT FOR DISCHARGE OF ITS FUNCTIONS SECTION 4(I)(B)(IV) of Right to Information Act 2005).



The Evaluation Process is Carried out in the Following Phases.

1. Selection of Schemes
2. Collection of Preliminary Data
3. Construction of Schedules
4. Short (1-2 days) Orientation of Field Staff on programme /scheme and methodology to be used.
5. Field Tours: Collection of Data
6. Preparation of Quantitative Note for each district (To supplement information gathered in the schedules
7. Report writing and its finalization
8. Approval of Report and its Publication
9. Follow up on Action taken by the concerned departments.

Part I: State Level Evaluation Studies.

i) Selection of Schemes

The selection of schemes (3 to 4) is undertaken *on an annual basis* in a meeting of the Steering Committee, under the chairmanship of the Development Commissioner. A *time schedule* to carry out the studies is finalized during the Steering Committee meeting in consultation with the Directorate officials. The Evaluation Directorate should strictly adhere to the time schedule, thus decided. The Development Commissioner is kept informed about the technical progress of the studies by *timely submission of quarterly reports*.

The Director/Additional Director assign the responsibility of the scheme to one Deputy Director/ Assistant Director who may be designated as AD Project In charge of the evaluation study.

ii) Collection of Preliminary Information & Finalization of Methodology

Preliminary data may be collected about the concerned schemes from the respective department through initial correspondence of Director/Additional Director and *personal follow up liason* by AD Project Incharge and Evaluation Officer Hq. The Director/Additional Director assign the responsibility of developing the design/methodology of the study to the *AD Project In-charge* under the supervision of the Deputy Director. The finalization of the methodology to be adopted would be subject to the approval of the Director/Joint Director.

iii) Construction of Schedules

The Asst. Director Project In-charge would be responsible for construction of the draft schedules for the Evaluation study. The draft schedules may be finalized by the Deputy Director and approved by Director/Joint Director.

iv) Short Orientation of Field Staff

Before undertaking the field tours, the Asst. Director Project In-charge and the Deputy Director conduct orientation programme of the field staff including the Asst. Directors,

Evaluation Officers, Investigators and, if possible, District Evaluation Officers of the districts falling in the sample of evaluation study. The objectives of the scheme and the evaluation study, the methodology to be followed and the schedules to be canvassed are explained and discussed during the orientation. *This would ensure uniformity in the quality of feed back received from the field staff.*

v) *Field Tours, Collection of Data and Preparation of Qualitative Note*

The *District Evaluation Officers* lead the field survey teams for collection of information from the concerned districts. The District Evaluation Officers should work in co-ordination with Asstt. Director District In-charge of the district and the Asstt. Director Project In-charge. The data collected at the district level should be consolidated at the District Evaluation Office and sent to the headquarters along with guidelines/brochures, draft report, observation note, photographic evidences. A copy of the same should be retained/maintained at the District office for record. The District Evaluation Officer should prepare a *Qualitative Note/Observation Note* i.e. a descriptive note, explaining the quality of service delivery in the district under the scheme, bottlenecks and lacunae, success stories and other issues relating to the scheme from the district. *The Qualitative Note should be submitted to the headquarters to provide useful insights during the report writing.*

vi) *Tabulation of Data & Report Writing*

The AD Project In-charge should consolidate all the information received from all the District Evaluation Officers (i.e. consolidated questionnaires and schedules) and carefully analyze the same. He/she should accordingly prepare the draft report and submit the same to the Deputy Director for examination. The finalization of the report is subject to the approval of the Joint Director/Director. The finalized report should be submitted to the Development Commissioner/Steering Committee for approval.

vii) *Approval of the Report.*

The Evaluation Report may be approved in the meeting of the Steering Committee under the chairmanship of the Development Commissioner. The findings and suggestions of the report should be discussed with the Secretary/Director of the concerned Department and future course of action/policy modifications/follow-up determined so that there is improvement/discontinuation in the programme implementation.

viii) *Follow-up Action.*

The Joint Director/Director is responsible for coordinating with the concerned Department to ensure follow-up action on the Evaluation Report and report to Development Commissioner in case of inactivity/indifference of the Department.

Without follow up, undertaking evaluation studies is merely an academic exercise. At present, the Evaluation Directorate has maintained sufficient liaison with the department to ensure/insist upon follow-up action on the Evaluation studies already undertaken.

MANUAL-V

V. RULES, REGULATIONS, INSTRUCTIONS, MANUAL AND RECORD FOR DISCHARGING FUNCTION SECTION 4(I)(B)(IV) of Right to Information Act 2005)

DOES NOT ARISE.

MANUAL-VI.

A STATEMENT OF CATEGORIES OF DOCUMENTS HELD BY THE AUTHORITY UNDER ITS CONTROL SECTION 4(I)(B)(IV) of Right to information Act, 2005)

EVALUATION STUDIES COMPLETED & PUBLISHED AND AVAILABLE ON WEBSITE

| Publication No | Name of the Studies | Year of Publication | Click to Download | Custodian of the documents | Contact No |
|----------------|--|---------------------|---------------------------|---|------------|
| 1 | 2 | 3 | 4 | 5 | 6 |
| 1 | Current Evaluation Report of Khandsari Sugar Project, Dimapur, and Sugarcane Development Programme in the State. | 1973 | Pub1.pdf | 1.Paunamheing, Evaluation Officer | 9436000968 |
| 2 | Evaluation Report on the Impact of Block Programme in Nagaland | 1975 | Pub2.pdf | 2. Smt.Toshimenla, Inspector, Directorate | 9862031534 |
| 3 | Report on Evaluation Study of Medium Sized Farm at Merapani | 1975 | Pub3.pdf | | |
| 4 | Report on Evaluation Study of Changki Valley Fruit Preservation & Canning Factory. | 1976 | Pub4.pdf | | |
| 5 | Snap Evaluation Report on Key Village Scheme in Nagaland | 1976 | Pub5.pdf | | |
| 6 | Evaluation Report on Government Sales Emporia in Nagaland | 1979 | Pub6.pdf | | |
| 7 | Evaluation Report on Primary Health Centres in Nagaland | 1980 | Pub7.pdf | | |
| 8 | Evaluation Report on Industrial Estate at Dimapur. | 1986 | Pub8.pdf | | |
| 9 | Evaluation Report on Elementary Education in Nagaland. | 1986 | Pub9.pdf | | |
| 10 | Evaluation Report on Rural Water Supply in Nagaland | 1983 | Pub10.pdf | | |
| 11 | Evaluation Report on Integrated Rural Development Programme. | 1986 | Pub11.pdf | | |
| 12 | Evaluation Report on Government Workshop Organization in Nagaland. | 1986 | Pub12.pdf | | |

| | | | | | |
|----|---|------|---------------------------|--|--|
| 14 | Evaluation Report on Village Development Boards in Phek District. | 1986 | Pub14.pdf | | |
| 16 | Evaluation Report on Piggery Breeding Farms in Nagaland | 1989 | Pub16.pdf | | |

| | | | | | |
|----|---|------|---------------------------|--|--|
| 17 | Evaluation Report on Integrated Rural Development Programme in Zunheboto District | 1989 | Pub17.pdf | | |
| 18 | Evaluation Report on Integrated Rural Development Programme in Phek District | 1992 | Pub18.pdf | | |
| 19 | A Quick Evaluation Report on TRYSEM in Mokokchung District. | 1992 | Pub19.pdf | | |
| 20 | Evaluation Report on Village Developments Boards Programmme in Wokha District | 1992 | Pub20.pdf | | |
| 21 | Evaluation Report on Village Development Boards Programmme in Kohima District | 1992 | Pub21.pdf | | |
| 22 | Evaluation Report on Integrated Child Development Scheme in Nagaland | 1991 | Pub22.pdf | | |
| 23 | Evaluation Report on IRDP in Tuensang District | 1992 | Pub23.pdf | | |
| 24 | Evaluation Report on Coffee Plantation Scheme in Phek District. | 1992 | Pub24.pdf | | |
| 25 | Evaluation Report on Primary Health Centres in Phek District. | 1992 | Pub25.pdf | | |
| 26 | Evaluation Report on Doyang Hydro Electric Project in Wokha District. | 1993 | Pub26.pdf | | |
| 27 | Evaluation Report on Wazeho Mini Cement Plant in Phek District. | 1996 | Pub27.pdf | | |
| 28 | Evaluation Report on Village Development Boards Programme in Mokokchung District. | 1996 | Pub28.pdf | | |
| 29 | Evaluation Report on Schools in Phek Town. | 1995 | Pub29.pdf | | |
| 30 | Evaluation Report on Referral Hospital at Dimapur. | 1996 | Pub30.pdf | | |
| 31 | A Quick Concurrent Evaluation Study Report on Likimro Hydro Electric Project. | 1998 | Pub31.pdf | | |
| 32 | Evaluation Report on Fair Price Shops in Zunheboto District. | 1996 | Pub32.pdf | | |
| 33 | Evaluation Report on Nutrition Programme in Phek District. | 1996 | Pub33.pdf | | |

| | | | | | |
|----|--|------|---------------------------|--|--|
| 34 | Evaluation Report on Survey on Rural Savings and its Utilization Mon District. | 1999 | Pub34.pdf | | |
| 35 | A Quick Evaluation Study Report on Soil and Water Conservation Programme in Zunheboto District. | 1997 | Pub35.pdf | | |
| 36 | Evaluation Study Report on Immunization of Children Programme in Nagaland. | 2000 | Pub36.pdf | | |
| 37 | Evaluation Study Report on Sericulture Development Programme in Zunheboto District. | 1997 | Pub37.pdf | | |
| 38 | Snap Evaluation Report on Indira Gandhi Stadium Complex at Kohima. | 1998 | Pub38.pdf | | |
| 39 | Evaluation Report on Horticulture Research Farm at Pfutsero. | 1998 | Pub39.pdf | | |
| 40 | Impact Evaluation Report on Family Health Awareness Programme in Nagaland. | 1999 | Pub40.pdf | | |
| 41 | Evaluation Report on Regional Rabbit Breeding Production Farm in Nagaland. | 2000 | Pub41.pdf | | |
| 42 | Evaluation Report on Horticulture Development in Wokha. | 2000 | Pub42.pdf | | |
| 43 | Compendium of Evaluation Studies conducted by Directorate of Evaluation (1970-2000) | 2001 | Pub43.pdf | | |
| 44 | Review of Evaluation Studies and Methodology followed by Nagaland State Evaluation Organization | 2001 | Pub44.pdf | | |
| 45 | Evaluation Report on Augmentation of Water Supply Scheme to Dimapur Town by Pumping System | 2001 | Pub45.pdf | | |
| 46 | Report on Sample Survey to Study Community participation in Rural Water Supply and Sanitation Programme in Dimapur District Nagaland | 2001 | Pub46.pdf | | |
| 50 | Evaluation Report on Registration of Birth and Deaths in Nagaland | 2003 | Pub50.pdf | | |
| 51 | Evaluation Report on Implementation of Swaran Jayanti Shahari Rozgar Yojana (SJSRY) in Nagaland | 2003 | Pub51.pdf | | |
| 52 | Evaluation Study "On Employment Opportunities Forgone by Nagas and Employment of Non-Nagas in the State" | 2007 | Pub52.pdf | | |
| 53 | Cost of Engaging And Maintaining Government Employees | 2008 | Pub53.pdf | | |
| 54 | Review Study on Changki Valley Fruit Preservation and Canning Factory | 2009 | Pub54.pdf | | |

| | | | | | |
|----|--|------|------------------------------|--|--|
| 55 | An Impact Evaluation Study of Communitisation in the Health Sector | 2009 | Study Report | | |
| 56 | Evaluation study on Old Age Pension in Peren District | 2012 | Study Report | | |
| 57 | Evaluation study on NST in Phek District | 2013 | Study Report | | |

MANUAL-VII

(VII) THE PARTICULARS OF ANY ARRANGEMENT THAT EXISTS FOR CONSUTATION WITH OR REPRESENTATION BY THE MEMBERS OF THE PUBLIC IN RELATION TO THE FORMULATION OF ITS POLICY OR, IMPLEMENTATION THEREOF. (Section 4 (1)(b) (vii) of right to information Act,2005)

Not applicable

MANUAL-VIII

A STATEMENT OF BOARDS, COUNCILs, OF COMMITTEES AND OTHER BODIES CONSISTING OF TWO OR MORE PERSONS CONSTITUTED AS ITS PART OR ETC. (Section 4 (1) (b) (viii) of right to information Act,2005)

Procedure followed and accountability.

The Directorate of Evaluation functions under the administrative control of the Planning & Co-ordination Department. All Steering Committee comprising of the following members decides the schemes of the Evaluation studies to be undertaken by the Directorate.

- | | |
|---|---------------------|
| i) Development Commissioner | : Chairman |
| ii) Secretary Finance Department | : Member |
| iii) Joint Secretary P & AR Department | : Member |
| iv) Vigilance Commissioner | : Member |
| v.) Principal/Commissioner & Secy/Secy and Head of the Department whose Scheme/report is under study. | : Co-opted Member |
| vi) OSD, Planning | : Member |
| vii) Additional Director /Director of Evaluation | : Member Secretary. |

MANUAL-IX**A DIRECTORY OF ITS OFFICERS AND EMPLOYEES.**

| Sl. No | Name | Designation & Place of Posting | Contact No. | E-mail ID(IF ANY) |
|--------|------------------------|---|--------------------------------|------------------------|
| 1 | 2 | 3 | 4 | 5 |
| 1 | Shri. R.B.Thong | ACS & Development Commissioner, Planning and Coordination Department | 0370-2270085(0) | |
| 2 | Smti.Kevileno Angami | OSD Planning and Coordination Department and Ex-officio Director, Directorate | 0370-2221745(0) 943-6063516 | Direvl-ngl @ nic.in |
| 3 | Shri.Shinito Sema | Additional Director, Directorate Kohima | 9436243219 | |
| 4 | Shri.Hugie Zeliang | Joint Director, Directorate, Kohima | 9436076868 | |
| 5 | Shri.Sentinuklu Jamir | Asst.Director, Directorate, Kohima | 9436655191 | |
| 6 | Shri.D.Disuang Zeme | Asst.Director, Directorate, Kohima. | 9615777751 | |
| 7 | Shri.B.Rendysowa Ao | Asstt.Director, Directorate, Kohima | 9436403174 | |
| 8 | Shri.Sevolhou Nyekha | Assistant Director, Directorate, Kohima | 9436612435 | |
| 9 | Nungsangtula Longkumer | Evaluation Officer, Directorate. | 9436062631 | |
| 10 | Shri.Paunamheing | District Evaluation Officer, Phek, | 8729856614 | |
| 11 | Shri.H.Reyove Epao | District Evaluation Officer, Dimapur | 9436063974 | |
| 12 | Shri.K.Etssorhomo | District Evaluation Officer, Wokha | 9436400539 | |
| 13 | Shri.A.Anden Moklong | District Evaluation Officer, Longleng | 6436673081 | |
| 14 | Shri.G.Hekuto | District Evaluation Officer, Zunheboto | 9436010902 | |
| 15 | Shri.Veshieto Kotso | District Evaluation Officer, Kohima | 9436810664 | |
| 16 | Shri.Renchamo Odyuo | District Evaluation Officer, Kiphire | 9862134939 | |
| 17 | Smti.Watisangla | District Evaluation Officer, Mkg | 8974324527 | |
| 18 | Shri.Erangnimbe thou | District Evaluation officer, Peren | 9612257151 | |
| 19 | Shri.Shellem | District Evaluation Officer, Tuensang | 9774637065 | |
| 20 | Shri.Sepozo | District Evaluation Officer, Mon | | |
| 21 | P.Toshimenla | Evaluation Inspector | 9862031534 | |
| 22 | M .Panger Aier | Evaluation Inspector | 9436820064 | |
| 23 | Sanuo | Evaluation Inspector | 9774034113 | |
| 24 | Avo Rhakho | Evaluation Inspector | 9612173722 | |
| 25 | Khrienguü Thevo | Evaluation Inspector | 9856850137 | |
| | Avino Yashu | Evaluation Inspector | 9615388871 | |
| 27 | T.Zuludemjen Ao | Evaluation Inspector | 9436072189 | |
| 28 | Setsovinuo Solo | Evaluation Inspector | 9436001683 | |
| 29 | Mayangchala | Evaluation Inspector | 9436205844 | |
| 30 | Imkongmeren | Evaluation Inspector | 9856511066 | |
| 31 | M.C. Namti Newmai | Evaluation Inspector | 9612927387 | |
| 32 | Nukshijungla | Evaluation Inspector | 9856535347 | |
| 33 | Sukheamew Yimchunger | Evaluation Inspector | 9615961938 | |
| 34 | Narola Rentta | Evaluation Inspector | 9436004839 | |
| 35 | Zulhunu | Evaluation Inspector | 9402820720 | |
| 36 | Zajamo kikon | Evaluation Inspector | 9612361689 | |
| 37 | Emkong Tonger | Evaluation Inspector | 8974918438 | |

| | | | | |
|----------|-------------------------|--------------------------|---------------------------|--|
| 38 | Shenwang Konyak | Evaluation Inspector | 9612669522 | |
| 39 | Dieselhoulie Angami | Evaluation Inspector | 8575090448 | |
| 40 | Tsathrongse Sangtam | Evaluation Inspector | 9612605482 | |
| 41 | Khehoshe Shohe | Evaluation Inspector | 9436267151 | |
| 42 | Temsuyanger Longkumer | Evaluation Inspector | 8414092811 | |
| 43 | S.Khoheshe Jakha | Evaluation Inspector | 9402434360 | |
| 44 | Vikehienuo Zhasa | Sub- Inspector | 8014945978 | |
| 45 | Neithozelhou | Sub- Inspector | 9856850018 | |
| 46 | C. Narola Jamir | Sub- Inspector | 9862851423 | |
| 47 | Pithungo Ngullie | Sub- Inspector | 8575814007 | |
| 48 | Pretso Mero | Sub- Inspector | | |
| 49 | Senti Jamir | Sub- Inspector | 9856275556 | |
| 50 | Rhondeno Ovung | Sub- Inspector | 8132033955 | |
| 51 | Masangum | Sub- Inspector | 9402696630 | |
| 52 | Kevimhietuoü Sorhie | Sub- Inspector | 9856300924 | |
| 53 | B. Khamlep | Sub- Inspector | 9612581404 | |
| 54 | H.Shokheamba Yimchunger | Sub- Inspector | 9862006644 | |
| 55 | Imtilepden Jamir | Sub- Inspector | 9615848175 | |
| 56 | Azuipei Lungalang | Sub- Inspector | 8731953876 | |
| 57 | Issac Tikhir | Sub- Inspector | 9612517172 | |
| 585 9 | Shri.Imtitoshi | Registrar | 9436614310 | |
| 60 | V.Maria Kiso | Assistant Superintendent | 9615876548 | |
| 61 | Ziuyisi chuilo | UDA | 9856900780 | |
| 62 | Twambe Zeliang | UDA | 8730085022 | |
| 63 | Pukhaxu Jhimo | LDA | 9436601375 | |
| 64 | Atsang Sangtam | LDA | 9436071237 | |
| 65 | Temjenlemla Aier | LDA | 9436401933 | |
| 66 | Kangzang | LDA | 9862528171 | |
| 67 | Khrolo Kronu | LDA | 9612176337 | |
| 68 | Moanaro Jamir | LDA | Directorate of Evaluation | |
| 69 | Khrienuo Purakhu | LDA | 9862997033 | |
| 70 | I.Akala Ao | LDA | 9402488012 | |
| 71 | B. Toshirenla | LDA | 961247782 | |
| 72 | Nzanthung Ngullie | LDA | 8730067419 | |
| 73 | Aseni Humtsoe | LDA | | |
| 74 | Yethoshe Tsuipe | LDA | 9856301135 | |
| 75 | Phiveo Venyo | LDA | 9402006187 | |
| 76 | N.John konyak | LDA | 9615778345 | |
| 77 | Chopongse Sangtam | LDA | 9862555917 | |
| 78 | Sekhozo Kezo | LDA | 8729922457 | |
| 79 | T.Nungasangmeren Jamir | LDA | 9862021950 | |
| 80 | S.Yangliseshi Sangtam | LDA | 9862672088 | |
| 81 | Kawakami Sentila | Stenographer | 9856771033 | |
| 82 | Shiholi | Typist | 9436000835 | |
| 83 | Lungdaihingle Haikam | Typist | 9862110028 | |

| | | | | |
|-----|--------------------|-----------------------|------------|--|
| 84 | Achuile Zeliang | Typist | 9436828130 | |
| 85 | T. alemchila Jamir | Typist | 9862141828 | |
| 86 | Ngonyeih Konyak | Typist | 8731900941 | |
| 87 | L.Yingjai Phom | Typist | 8732088325 | |
| 88 | Gemdaulie | Peon | | |
| 89 | Asaplie | Peon | 7085994953 | |
| 90 | Mhasiriezo Kire | Peon | 9856294659 | |
| 91 | Iramteing Hegwang | Peon | 9774717465 | |
| 92 | Athia Yiese | Peon | | |
| 93 | Phongyei Phom | Peon | 9612622657 | |
| 94 | Burlemba | Peon | 8014115222 | |
| 95 | Nyimtsemo Lotha | Peon | 9089192252 | |
| 96 | T.Hokishe Zhimomi | Peon | 8575752834 | |
| 97 | Motsolo | Peon | | |
| 98 | H.Puyong Konyak | Peon | 9436265143 | |
| 99 | Murekiu Yimchunger | Peon | 9862676178 | |
| 100 | Raigong | Peon | 9436686088 | |
| 101 | Suiheulungbe | Peon | 8575925445 | |
| 102 | Hothrise Sangtam | Peon | 9862105739 | |
| 103 | Vitsonuo Kire | Sweeper | 9856070468 | |
| 104 | Kezhawelie Leno | Chowkidar | | |
| 105 | L.Kath | Chowkidar-cum Sweeper | | |
| 106 | Nokching Nyaku | Chowkidar | 9436071657 | |
| 107 | Rechael Chang | Sweeper | 8415015581 | |
| 108 | Imolangla | Chowkidar-cum Sweeper | 9862611117 | |
| 109 | Nzanbeni Odyuo | Chowkidar-cum Sweeper | 9612872730 | |
| 110 | Khighovi Sema | Chowkidar-cum Sweeper | 8974471766 | |
| 111 | Vetsütolu | Chowkidar-cum Sweeper | 9612202322 | |
| 112 | T.Yiangpong Konyak | Chowkidar-cum Sweeper | | |
| 113 | Hampu Yimchunger | Chowkidar-cum Sweeper | 9436210123 | |
| 114 | Subenthung Lotha | Driver | 9612990828 | |
| 115 | Kalu Bahadur | Driver | 9774408604 | |
| 116 | Meyajalie Khate | Driver | 8014057262 | |
| 117 | VeyekroVenuh | Driver | 9615936518 | |
| 118 | Vehukho Thingo | Driver | 8729923537 | |
| 119 | Kughaho Zhimomi | Driver | 9089586110 | |
| 120 | Yangtan Yimchunger | Driver | 8575723938 | |
| 121 | Visheto Sumi | Driver | 9402079505 | |
| 122 | Bendangsunep Aier | Driver | 9774822483 | |
| 123 | Welhite Sarah | Driver | | |
| 124 | Thupuhuzo Lupo-o | Driver | | |
| 125 | John Pongen | Driver | | |
| 126 | Ngonuzo Chuzho | Driver | 9402809312 | |
| 127 | Vinoka | Driver | | |
| 128 | KhroweloKhape | Driver | | |
| 129 | Ipeidang Hega | Driver | 9402747559 | |
| 130 | Setingkyu Sangtam | Driver | 8730053715 | |
| 131 | Chineo Lotha | Driver | 9862826525 | |
| 132 | Kikashe | Driver | | |
| | | | | |

MANUAL-X

THE MONTHLY RENUMERATION RECEIVED BY EACH OFFICERS AND EMPLOYEES, INCLUDING THE SYSTEM OF COMPENSATION AS PROVIDED IN ITS REGULATIONS. (AS ON 31ST MARCH 2017)

The following statement are held in record (a) List of all categories of employees (b) List of all employees with the names, designation, place of posting, basic pay, total monthly emoluments, status and tenure of appointment, other service details as furnished. (c)The budget allocation under PLAN/NON- PLAN, seniority list etc. (d) All the 55 Evaluation reports.

Monthly remuneration received by each officer and staff.

1. The list of officers and employees under establishment of Directorate of Evaluation with Pay Band is given below.

MANUAL-X The monthly remuneration received by each of its officers and employee , including the system of compensation as provided in its regulations. (As on 31st March 2017)

| <i>S l . N o .</i> | <i>Name</i> | <i>Father's Name</i> | <i>G e n d e r</i> | <i>Designation</i> | <i>DOB</i> | <i>Date of entry into service/first appointment</i> | <i>Qualificatio n</i> | <i>Status (Regular /Contract/ Adhoc/ Continge ncy</i> | <i>Date of appointment into present post</i> | <i>Place of posting</i> | <i>Date of retirement</i> | <i>Pay Band</i> | <i>Gra de Pay</i> | <i>Gross Salary</i> |
|--|------------------|----------------------|--|---------------------|------------|---|---------------------------|---|--|-----------------------------|-------------------------------|------------------|---------------------------|-------------------------|
| 1 | 2 | 3 | 4 | 5 | 6 | 7 | 8 | 9 | 10 | 11 | 12 | 13 | 14 | 15 |
| 1 | Shinito sema | Lt. Vilho Sema | M | Additional Director | 13.12.1960 | 25.09.1984 | B.Com | Regular | 18.11.2014 | Directorate | 30.09.2019 | PB-3-15600-39100 | 8700 | 95627 |
| 2 | H. Hugie Zeliang | Hangmai Zeliang | M | Joint Director | 01.01.1964 | 09.03.1982 | PU | Regular | 18.11.2014 | Directorate | 31.03.2017 | PB-3-15600-39100 | 7600 | 78909 |

| | | | | | | | | | | | | | | |
|----|------------------------|---------------------|---|----------------------|------------|------------|-------------|----------|------------|-------------|------------|------------------|------|-------|
| 3 | I.Sentinuklu Jamir | Imesosang | M | Deputy Director | 05.11.1964 | 27.11.1988 | BA | Regular | 12.09.2012 | Directorate | 30.11.2023 | PB-3-15600-39100 | 6600 | 69322 |
| 4 | D.Disuang Zeme | Liahing Zeme | M | Assistant Director | 05.04.1965 | 09.05.1983 | BA | Regular | 12.11.2014 | Directorate | 31.05.2018 | PB-3-15600-39100 | 5700 | 64893 |
| 5 | B.Rendysowa Ao | Bendangangnen | M | Assistant Director | 15.10.1964 | 24.09.1990 | BA LLB | Regular | 30.07.2015 | Directorate | 31.10.2024 | PB-3-15600-39100 | 5700 | 64796 |
| 6 | Sevolhu Nyekha | Lt..Lhutsoyi Nyekha | M | Assistant Director | 15.06.1958 | 14.08.1990 | MA | Regular | 21.02.2008 | Directorate | 30.06.2018 | PB-2-9300-34800 | 5700 | 73194 |
| 7 | Nungsangtula Longkumer | Lt.Taku Longkumer | F | Evaluation Officer | 25.07.1971 | 21.05.1993 | BA | Regular | 21.05.1993 | Directorate | 31.05.2028 | PB-2-9300-34800 | 4600 | 56713 |
| 8 | P.Toshimenla | Lt. Puryapang | F | Evaluation Inspector | 23.04.1964 | 11.11.1987 | PU | Regular | 16.08.1996 | Directorate | 30.11.2022 | PB-1-5200-20200 | 2800 | 39078 |
| 9 | M .Panger Aier | Lt. Mar | M | Evaluation Inspector | 21.03.1963 | 16.11.1987 | PU | Regular | 29.01.1999 | Directorate | 30.11.2022 | PB-1-5200-20200 | 2800 | 45585 |
| 10 | Sanuo | Rev. Hazieding | F | Evaluation Inspector | 03.03.1964 | 11.11.1987 | PU | Regular | 25.05.2006 | Directorate | 30.11.2022 | PB-1-5200-20200 | 2800 | 42511 |
| 11 | Avo Rhakho | Lt.Thepusüyi Rhakho | F | Evaluation Inspector | 2.10.1976 | 29.06.2000 | BA | Regular | 12.09.2012 | Directorate | 30.06.2036 | PB-1-5200-20200 | 2800 | 32804 |
| 12 | Khrienguü Thevo | Vilie Thevo | F | Evaluation Inspector | 06.06.1986 | 29.07.2004 | BA | Regular | 12.09.2012 | Directorate | 31.07.2039 | PB-1-5200-20200 | 2800 | 31787 |
| 13 | Avino Yashu | M.L Angami | F | Evaluation Inspector | 3.04.1976 | 04.07.2008 | MA | Regular | 30.04.2013 | Directorate | 30.04.2036 | PB-1-5200-20200 | 2800 | 30868 |
| 14 | Neithozelhou | Lt. Pfudilhu Angami | M | Sub-Inspector | 25.06.1979 | 15.09.2012 | BA | Regular | 15.09.2012 | Directorate | 30.09.2039 | PB-1-5200-20200 | 2000 | 22785 |
| 15 | C. Narola Jamir | A.Chiten Jamir | F | Sub-Inspector | 07.12.1981 | 16.12.2013 | MA | Regular | 16.12.2013 | Directorate | 31.12.2041 | PB-1-5200-20200 | 2000 | 21478 |
| 16 | Senti Jamir | N.Bendang Jamir | M | Sub-Inspector | 03.02.1987 | 19.12.2014 | BA | Contract | 19.12.2014 | Directorate | 31.07.2047 | PB-1-5200-20200 | 2000 | 20849 |
| 17 | Imtitoshi Longkumer | Peyongzulu | M | Registrar | 05.11.1958 | 09.03.1982 | Matriculate | Regular | 20.10.2015 | Directorate | 31.03.2017 | PB-3-15600-39100 | 5700 | 62390 |

| | | | | | | | | | | | | | | |
|----|------------------|----------------------|---|--------------------------|------------|------------|--------------|----------|------------|-------------|------------|-----------------|------|-------|
| 18 | V.Maria Kiso | Vizopal Kiso | F | Assistant Superintendent | 27.01.1970 | 30.10.1991 | BA | Regular | 29.10.2015 | Directorate | 31.10.2026 | PB-2-9300-34800 | 4400 | 45339 |
| 19 | Ziuyisi chuilo | Itungding | F | UDA | 02.06.1970 | 02.07.1992 | BA | Regular | 26.09.2011 | Directorate | 31.07.2027 | PB-1-5200-20200 | 2800 | 37822 |
| 20 | Twambe Zeliang | Heuzeteusing Zeliang | M | UDA | 29.11.1970 | 25.11.2002 | Matriculate | Regular | 06.11.2015 | Directorate | 31.10.2026 | PB-1-5200-20200 | 2800 | 41302 |
| 21 | Pukhaxu Jhimo | Asapu Lazimi | M | LDA | 08.02.1970 | 02.07.1992 | BA | Regular | 02.01.1995 | Directorate | 31.01.2030 | PB-1-5200-20200 | 2400 | 37958 |
| 22 | Atsang Sangtam | Lt..Thsipenthe | M | LDA | 24.12.1976 | 08.03.2011 | MA | Regular | 08.03.2011 | Directorate | 31.12.2036 | PB-1-5200-20200 | 2000 | 23963 |
| 23 | Temjenlemla Aier | Lanusobo Aier | F | LDA | 18.03.1975 | 05.12.1998 | BA | Regular | 01.06.2012 | Directorate | 31.12.2033 | PB-1-5200-20200 | 2000 | 28866 |
| 24 | Kangzang | Lt.Kwehoing | M | LDA | 28.08.1983 | 28.02.2014 | BA | Contract | 28.02.2014 | Directorate | 31.08.2043 | PB-1-5200-20200 | 2000 | 21478 |
| 25 | Khrolo Kronu | Wenyi Kronu | M | LDA | 31.12.1981 | 25.11.2014 | BA | Contract | 25.11.2014 | Directorate | 30.11.2041 | PB-1-5200-20200 | 2000 | 20849 |
| 26 | Moanaro Jamir | Temjenmeren | F | LDA | 25.05.1987 | 30.03.2016 | B.Sc.(hons) | Contract | 30.03.2016 | Directorate | 31.03.2047 | PB-1-5200-20200 | 2000 | 19424 |
| 27 | Kawakami Sentila | R.Talimeren | F | Stenographer | 03.03.1978 | 17.11.2006 | BA | Regular | 01.06.2012 | Directorate | 31.03.2038 | PB-1-5200-20200 | 2600 | 36119 |
| 28 | Shiholi | Khumtsa | F | Typist | 01.01.1960 | 09.03.1982 | Under matric | Regular | 09.03.1982 | Directorate | 30.04.2017 | PB-2-9300-34800 | 5400 | 72613 |
| 29 | Kalu Bahadur | Pahal Sing Grale | M | Driver | 19.03.1971 | 01.08.1995 | Under matric | Regular | 27.11.2002 | Directorate | 31.08.2030 | PB-1-5200-20200 | 2400 | 32755 |
| 30 | Meyajalie Khate | Vizovonyü Khate | M | Driver | 15.02.1980 | 19.07.2006 | Under matric | Regular | 02.07.2007 | Directorate | 28.02.2040 | PB-1-5200-20200 | 1800 | 22208 |
| 31 | Gemdaulie | P.Angau Hinglak | F | Peon | 03.09.1980 | 02.06.2000 | Matriculate | Regular | 02.06.2000 | Directorate | 31.06.2035 | IS-4400-17200 | 1800 | 23717 |

| | | | | | | | | | | | | | | |
|----|--------------------|-----------------------|---|-----------------------------|------------|------------|--------------|-------------|------------|-------------|------------|-----------------|------|-------|
| 32 | Asaplie | Namkwang Diswang | F | Peon | 28.04.1989 | 09.03.2007 | Matriculate | Regular | 09.03.2007 | Directorate | 31.03.2042 | IS-4400-17200 | 1400 | 19146 |
| 33 | Mhasiriezo Kire | Lt. Vizotuo Kire | M | Peon | 27.06.1988 | 13.10.2008 | Matriculate | Regular | 13.10.2008 | Directorate | 31.10.2043 | IS-4400-17200 | 1400 | 19058 |
| 34 | Iramteing Hegwang | Lt.Hegwangdui Zeliang | M | Peon | 29.12.1994 | 16.12.2013 | Matriculate | Contract | 16.12.2013 | Directorate | 31.12.2048 | IS-4400-17200 | 1400 | 15125 |
| 35 | Vitsonuo Kire | Salu | F | Sweeper | 23.02.1980 | 12.03.2007 | Under matric | Regular | 12.03.2007 | Directorate | 28.02.2040 | IS-4400-17200 | 1300 | 20354 |
| 36 | Kezhawelie Leno | Vikeyie | M | Chowkidar | 31-08-1992 | 05.05.2016 | Under matric | Contract | 05.05.2016 | Directorate | 31.05.2047 | IS-4400-17200 | 1300 | 14877 |
| 37 | VeyekroVenuh | Lt. Nesuhu Venuh | M | Driver | 09.02.1982 | 05.05.2006 | Under matric | Regular | 05.05.2006 | District | 31.05.2041 | PB-1-5200-20200 | 1800 | 18381 |
| 38 | Vehukho Thingo | Arha Thingo | M | Driver | 23.10.1983 | 16.04.2007 | Under matric | Regular | 16.04.2007 | District | 30.04.2042 | PB-1-5200-20200 | 1800 | 18381 |
| 39 | Kughaho Zhimomi | Chinisho | M | Driver | 19.02.1989 | 19.05.2008 | Under matric | Regular | 19.05.2008 | District | 31.05.2043 | PB-1-5200-20200 | 1800 | 17638 |
| 40 | Yangtan Yimchunger | Lt. Longri Yimchunger | M | Driver | 06.02.1987 | 19.05.2008 | Under matric | Contingency | 19.05.2008 | Directorate | 31.05.2047 | Fixed | 4050 | 4050 |
| 41 | Visheto Sumi | Kheshena | M | Driver | 24.12.1978 | 01.10.2011 | Under matric | Contingency | 19.05.2008 | Directorate | 31.05.2038 | Fixed | 4050 | 4050 |
| 42 | Bendangsune p Aier | Maongkaba Aier | M | Driver | 04.10.1994 | 11.12.2013 | Under matric | Contingency | 11.12.2013 | Directorate | 31.12.2050 | Fixed | 4050 | 4050 |
| 43 | Kikashe | Lhokishe Sema | M | Driver | 24.11.1990 | 01.06.2016 | Under matric | Contingency | 01.06.2016 | Directorate | 31.05.2045 | Fixed | 4050 | 4050 |
| 44 | Welhite Sarah | Kedukha | M | Driver | 15.10.1984 | 21.09.2015 | Under matric | Contingency | 21.09.2015 | Directorate | 30.09.2044 | Fixed | 4050 | 4050 |
| 45 | Veshietso Kotso | Lt.Daru | M | District Evaluation Officer | 01.04.1965 | 11.09.1990 | BA | Regular | 12.09.2012 | Kohima | 30.09.2025 | PB-2-9300-34800 | 5400 | 62473 |
| 46 | Shri.Chubazulu | Lt.impusemba | M | Evaluation Inspector | 01.03.1957 | 05.08.1983 | BA | Regular | 05.08.1983 | Kohima | 28.02.2017 | PB-1-5200-20200 | 2800 | 64549 |
| 47 | Vikehienuo Zhasa | Lt. Vitsilhu Zhasa | F | Evaluation Inspector | 08.09.1985 | 16.07.2007 | BA | Regular | 15.09.2012 | Kohima | 31.09.2038 | PB-1-5200-20200 | 2800 | 28254 |

| | | | | | | | | | | | | | | |
|----|----------------------|-----------------|---|-----------------------------|------------|------------|--------------|-------------|------------|---------|------------|-----------------|------|-------|
| 48 | Pithungo Ngullie | Lt.Mhonchan | M | Sub-Inspector | 05.01.1981 | 16.12.2013 | MA | Regular | 16.12.2013 | Kohima. | 31.01.2041 | PB-1-5200-20200 | 2000 | 20849 |
| 49 | Khrienuo Purakhu | Lt.. Eyore | F | LDA | 19.03.1968 | 01.05.1989 | PU | Regular | 01.05.1089 | Kohima. | 31.05.2024 | PB-1-5200-20200 | 2800 | 37965 |
| 50 | Lungdaihingle Haikam | Heihangding | F | Typist | 02.06.1965 | 01.05.1989 | Under matric | Regular | 01.05.1989 | Kohima. | 30.04.2024 | PB-1-5200-20200 | 2000 | 33772 |
| 51 | Athia Yiese | Neiselhou | F | Peon | 02.01.1974 | 17.11.2003 | Under matric | Regular | 17.11.2003 | Kohima. | 31.01.2034 | IS-4400-17200 | 1400 | 20765 |
| 52 | L.Kath | Yedemo | F | Chowkidar-cum Sweeper | 17.04.1978 | 26.02.2010 | Under matric | Regular | 26.02.2010 | Kohima. | 30.04.2039 | IS-4400-17200 | 1300 | 17969 |
| 53 | Thupuhuzo Lupo-o | Lt. Sukrhonguyi | M | Driver | 21.03.1990 | 21.09.2015 | Matriculate | Contingency | 14.02.2014 | Kohima. | 28.02.2050 | Fixed | 4050 | 4050 |
| 54 | H.Reyove Epao | Lt.Huvotso | M | District Evaluation Officer | 10.02.1968 | 03.10.1990 | BA | Regular | 30.04.2014 | Dimapur | 31.10.2025 | PB-2-9300-34800 | 5400 | 64342 |
| 55 | T.Zulutemjen Ao | Tongpangretsu | M | Evaluation Inspector | 27.05.1969 | 03.02.1999 | BA | Regular | 12.09.2012 | Dimapur | 31.05.2029 | PB-1-5200-20200 | 2800 | 33433 |
| 56 | Setsovinuo Solo | Khrieliehu Solo | F | Evaluation Inspector | 31.01.1974 | 22.05.1997 | BA | Regular | 16.08.2012 | Dimapur | 31.05.2032 | PB-1-5200-20200 | 2800 | 38031 |
| 57 | Pretso Mero | Meselhito Mero | M | Sub-Inspector | 01.03.1993 | 07.10.2015 | B.A | Contract | 07.10.2015 | Dimapur | 31.10.2049 | PB-1-5200-20200 | 2000 | 20849 |
| 58 | I.Akala Ao | Adi Ao(H) | F | LDA | 04.08.1965 | 09.03.1982 | BA | Regular | 12.11.1993 | Dimapur | 31.08.2025 | PB-1-5200-20200 | 2000 | 43111 |
| 59 | Achuile Zeliang | Thiwi Zeliang | F | Typist | 07.02.1968 | 01.05.1989 | Under matric | Regular | 01.05.1989 | Dimapur | 30.04.2024 | PB-1-5200-20200 | 2000 | 34788 |
| 60 | Subenthung Lotha | Thosamo | M | Driver | 30.11.1969 | 12.11.1993 | Under matric | Regular | 10.02.1994 | Dimapur | 28.02.2029 | PB-1-5200-20200 | 2400 | 33409 |

| | | | | | | | | | | | | | | |
|----|--------------------|---------------------|---|-----------------------------|------------|------------|--------------|-------------|------------|-------------|------------|-----------------|------|-------|
| 61 | Nokching Nyaku | Thosamo | M | Chowkidar | 23.02.1980 | 04.06.2007 | Class VII | Regular | 04.06.2007 | Dimapur | 30.06.2042 | IS-4400-17200 | 1400 | 19546 |
| 62 | Rechael Chang | B.Monuko | F | Sweeper | 04.06.1989 | 04.06.2007 | Class VII | Regular | 04.06.2007 | Dimapur | 30.06.2042 | IS-4400-17200 | 1400 | 19146 |
| 63 | Phongyei Phom | Angtok | M | Peon | 20.05.1985 | 01.03.2013 | Under matric | Contract | 01.03.2013 | Dimapur | 31.05.2045 | IS-4400-17200 | 1400 | 15583 |
| 64 | M.Watisangla Ao | Mapuzemba Ao | F | District Evaluation Officer | 18.05.1964 | 10.09.1990 | BA | Regular | 02.08.2012 | Mokokchun g | 31.05.2024 | PB-2-9300-34800 | 5400 | 64312 |
| 65 | Mayangchala | Lt.Mayangsang ba Ao | F | Evaluation Inspector | 15.08.1963 | 11.11.1987 | PU | Regular | 24.02.2008 | Mokokchun g | 30.11.2022 | PB-1-5200-20200 | 2800 | 41661 |
| 66 | Imkongmeren | Moyanungshi | M | Evaluation Inspector | 06.03.1984 | 04.07.2008 | B.Com | Regular | 17.12.2014 | Mokokchun g | 31.07.2043 | PB-1-5200-20200 | 2800 | 29077 |
| 67 | B. Toshirenla | Burlemba | F | LDA | 12.11.1966 | 01.05.1989 | Matriculate | Regular | 01.05.1989 | Mokokchun g | 30.04.2024 | PB-1-5200-20200 | 2800 | 38152 |
| 68 | T. alemchila Jamir | Tendilemba | F | Typist | 06.02.1969 | 07.09.1990 | Under matric | Regular | 07.09.1990 | Mokokchun g | 30.09.2025 | PB-1-5200-20200 | 2400 | 34256 |
| 69 | Burlemba | Pangitsuba | M | Peon | 02.04.1964 | 28.10.1988 | Under matric | Regular | 28.10.1988 | Mokokchun g | 31.10.2023 | IS-4400-17200 | 1800 | 28073 |
| 70 | Imolangla | Imti Yaden | F | Chowkidar-cum Sweeper | 14.11.1987 | 07.07.2010 | Under matric | Regular | 07.07.2010 | Mokokchun g | 31.07.2045 | IS-4400-17200 | 1400 | 19058 |
| 71 | John Pongen | James Pongen | M | Driver | 14.01.1986 | 21.09.2015 | Matriculate | Contingency | 21.09.2015 | Mokokchun g | 30.09.2046 | Fixed | 4050 | 4050 |

| | | | | | | | | | | | | | | |
|----|-------------------------|-------------------------|---|-----------------------------------|------------|------------|-------------------|----------|------------|-----------|------------|---------------------|------|-------|
| 72 | K.Etssorhomo lotha | Lt..Khyatheo | M | District Evaluation Officer | 13.02.1961 | 11.09.1990 | MA(Econo mics) | Regular | 18.06.2008 | Wokha | 28.02.2021 | PB-2-9300- 34800 | 5400 | 60247 |
| 73 | M.C. Namti Newmai | Lt.N.Kipingbo Newmai | M | Evaluation Inspector | 13.09.1969 | 19.08.1991 | Matriculate | Regular | 04.07.2008 | Wokha | 31.08.2026 | PB-1-5200- 20200 | 2800 | 40185 |
| 74 | Nukshijungla | Lt. Ladongmeren | F | Evaluation Inspector | 15.10.1976 | 03.02.1999 | MA | Regular | 16.08.2012 | Kohima | 28.02.2034 | PB-1-5200- 20200 | 2800 | 32489 |
| 75 | Rhondeno Ovung | Lt. Peter Ovung | F | Sub- Inspector | 28.01.1985 | 15.09.2012 | BA | Regular | 15.09.2012 | Wokha | 30.09.2045 | PB-1-5200- 20200 | 2000 | 22132 |
| 76 | Nzanthung Ngullie | Renbomo Agullie | M | LDA | 12.08.1988 | 16.12.2013 | BA | Regular | 16.12.2013 | Wokha | 31.08.2048 | PB-1-5200- 20200 | 1900 | 20486 |
| 77 | Aseni Humtsoe | Khumchamo Lotha | F | LDA | | 01.07.1985 | Under matric | Contract | 16.03.2016 | Wokha | 31.05.2044 | PB-1-5200- 20200 | 1900 | 19421 |
| 78 | Nyimtsemo Lotha | luthüngo Lotha | M | Peon | 27.08.1966 | 25.10.1988 | Under matric | Regular | 25.10.1988 | Wokha | 31.10.2023 | IS-4400-17200 | 1800 | 26670 |
| 98 | Nzanbeni Odyuo | Lt.Mhonlumo | F | Chowkidar- cum Sweeper | 13.03.1969 | 26.02.2010 | Under matric | Regular | 26.02.2010 | Wokha | 31.03.2029 | IS-4400-17200 | 1300 | 18902 |
| 80 | Ngonuzo Chuzho | Hupuyi Chuzho | M | Driver | 26.04.1977 | 04.02.2009 | Under matric | Regular | 04.02.2009 | Wokha | 30.04.2037 | PB-1-5200- 20200 | 1800 | 18381 |
| 81 | G.Hekuto Sema | Ghoshixu | M | District Evaluation Officer | 10.05.1965 | 11.07.1985 | BA | Regular | 12.09.2012 | Zunheboto | 31.07.2020 | PB-2-9300- 34800 | 5400 | 66660 |
| 82 | Sukheamew Yimchunger | Yutsumew Yimchunger | M | Evaluation Inspector | 29.10.1986 | 09.11.2009 | MA(Econo mics) | Regular | 09.11.2009 | Zunheboto | 30.11.2044 | PB-1-5200- 20200 | 2800 | 33723 |

| | | | | | | | | | | | | | | |
|----|----------------------|----------------------|---|-----------------------|------------|------------|--------------|-------------|------------|-------------|------------|-----------------|------|-------|
| 83 | Narola Rentta | Aribo Rentta | F | Evaluation Inspector | 30.07.1973 | 04.07.2008 | BA | Regular | 07.08.2015 | Zunheboto | 31.07.2033 | PB-1-5200-20200 | 2800 | 27673 |
| 84 | Masangum | Liagum | M | Sub-Inspector | 24.12.1978 | 15.09.2012 | BA | Regular | 15.09.2012 | Zunheboto | 30.09.2038 | PB-1-5200-20200 | 2000 | 22761 |
| 85 | Yethoshe Tsuipu | Kivixe Tsuipu | M | LDA | 24.12.1978 | 17.12.2013 | MA (History) | Regular | 17.12.2013 | Zunheboto | 30.11.2048 | PB-1-5200-20200 | 1900 | 20486 |
| 86 | T.Hokishe Zhimomi | Thahezu | M | Peon | 09.03.1965 | 02.12.1987 | Under matric | Regular | 02.12.1987 | Zunheboto | 31.12.2022 | IS-4400-17200 | 1800 | 28073 |
| 87 | Khighovi Sema | Ghozhevi | M | Chowkidar-cum Sweeper | 14.03.1972 | 26.02.2010 | Under matric | Regular | 26.02.2010 | Zunheboto | 31.03.2032 | IS-4400-17200 | 1300 | 18997 |
| 88 | Vinoka | Khaghovi | M | D | 21.06.1987 | 03.01.2014 | Under matric | Contingency | 03.01.2014 | Zunheboto | - | Fixed | 4050 | 4050 |
| 89 | Paunamheing | Kengimkulung | M | Evaluation Officer | 03.05.1969 | 07.09.1990 | BA | Regular | 30.07.2015 | Directorate | 30.09.2025 | PB-2-9300-34800 | 5400 | 61166 |
| 90 | Zulhunu | Lt. Muthalhu | M | Evaluation Inspector | 01.03.1959 | 11.11.1987 | Matriculate | Regular | 26.07.2004 | Phek | 28.02.2019 | PB-1-5200-20200 | 2800 | 41685 |
| 91 | Zajamo kikon | Yanpansao Kikon | M | Evaluation Inspector | 10.02.1984 | 10.11.2009 | MA | Regular | 10.11.2009 | Phek | 28.02.2044 | PB-1-5200-20200 | 2800 | 33723 |
| 92 | Kevimhietu oü Sorhie | Thezielhoulie Sorhie | F | Sub-Inspector | 08.08.1982 | 15.09.2012 | MA | Regular | 15.09.2012 | Phek | 30.09.2042 | PB-1-5200-20200 | 2000 | 22132 |
| 93 | Phiveo Venyo | Mudolhu | M | LDA | 09.09.1963 | 10.09.1990 | Matriculate | Regular | 20.09.1990 | Phek | 30.09.2023 | PB-1-5200-20200 | 2800 | 38352 |
| 94 | Motsolo | Lt.Chüzelo | M | Peon | 24.03.1960 | 28.11.1988 | Under matric | Regular | 28.11.1988 | Phek | 31.03.2020 | IS-4400-17200 | 1800 | 28073 |

| | | | | | | | | | | | | | | |
|-----|---------------------|--------------------|---|-----------------------------|------------|------------|----------------|-------------|------------|----------|------------|-----------------|------|-------|
| 95 | Vetsütolu | Phiveo Venyo(H) | F | Chowkidar-cum Sweeper | 01.02.1972 | 26.02.2010 | Under matric | Regular | 26.02.2010 | Phek | 31.01.2032 | IS-4400-17200 | 1300 | 18902 |
| 96 | KhroweloKhape | Zhiertshulo Khape | M | Driver | 19.02.1981 | 21.09.2015 | Under matric | Contingency | 21.09.2015 | Phek | - | Fixed | 4050 | 4050 |
| 97 | Sepozo Phesao | Ciswuyi Phesao | M | District Evaluation Officer | 23.07.1985 | 19.11.2014 | M.A(Economics) | Regular | 19.11.2014 | Mon | 31.07.2045 | PB-2-9300-34800 | 4600 | 42024 |
| 98 | Emkong Tonger | T.Tonger Ao | M | Evaluation Inspector | 21.08.1965 | 04.02.2002 | MA | Regular | 26.10.1995 | Mon | 31.08.2025 | PB-1-5200-20200 | 2800 | 53204 |
| 99 | Shenwang Konyak | Banwang | M | Evaluation Inspector | 06.06.1981 | 28.08.2008 | BA | Regular | 28.08.2008 | Mon | 30.06.2041 | PB-1-5200-20200 | 2800 | 30815 |
| 100 | B. Khamlep | W.Bene | M | Sub-Inspector | 20.09.1987 | 17.12.2013 | B.A | Regular | 17.12.2013 | Mon | 30.09.2047 | PB-1-5200-20200 | 2000 | 21478 |
| 101 | N.John konyak | M.Nyiemnyei Konyak | M | LDA | 30.10.1969 | 10.09.1990 | Matriculate | Regular | 10.09.1990 | Mon | 31.09.2025 | PB-1-5200-20200 | 2800 | 38878 |
| 102 | Ngonyeih Konyak | Thakwang Konyak | F | Typist | 01.03.1978 | 04.07.2003 | Under matric | Regular | 04.07.2003 | Mon | 28.02.2038 | PB-1-5200-20200 | 2400 | 25762 |
| 103 | H.Puyong Konyak | Lt.Hongling Konyak | M | Peon | 10.04.1972 | 05.07.1991 | Under matric | Regular | 05.07.1991 | Mon | 31.07.2026 | IS-4400-17200 | 1800 | 26463 |
| 104 | T.Yiangpong Konyak | Tonhei Konyak | M | Chowkidar-cum Sweeper | 04.04.1963 | 26.02.2010 | Under matric | Regular | 26.02.2010 | Mon | 30.04.2023 | IS-4400-17200 | 1300 | 18502 |
| 105 | Shellem | Koi | M | District Evaluation Officer | 26.06.1987 | 19.11.2014 | MA (Economics) | Regular | 19.11.2014 | Tuensang | 30.06.2047 | PB-2-9300-34800 | 4600 | 43258 |
| 106 | Dieselhoulie Angami | Thekruvilie Sachu | M | Evaluation Inspector | 07.02.1962 | 11.05.1992 | P.U | Regular | 20.05.2011 | Tuensang | 28.02.2022 | PB-1-5200-20200 | 2800 | 40911 |

| | | | | | | | | | | | | | | |
|-----|-------------------------|--------------------|---|-----------------------------|------------|------------|--------------|-------------|------------|----------|------------|-----------------|------|-------|
| 107 | Tsathrongse Sangtam | Yohose Sangtam | M | Evaluation Inspector | 01.01.1961 | 02.12.1987 | PU | Regular | 24.03.2008 | Tuensang | 31.12.2020 | PB-1-5200-20200 | 2800 | 41661 |
| 108 | H.Shokheamba Yimchunger | Hekioba Yimchunger | M | Sub-Inspector | 19.04.1976 | 15.09.2012 | BA | Regular | 15.09.2012 | Kiphire | 30.09.2036 | PB-1-5200-20200 | 2000 | 22761 |
| 109 | Chopongse Sangtam | Horise | M | LDA | 02.01.1968 | 01.10.1990 | Matriculate | Regular | 01.10.1990 | Tuensang | 30.09.2025 | PB-1-5200-20200 | 1900 | 36748 |
| 110 | L.Yingjai Phom | Pongo | F | Typist | 11.03.1968 | 01.05.1989 | Under matric | Regular | 01.05.1985 | Tuensang | 31.01.2020 | PB-1-5200-20200 | 2400 | 34498 |
| 111 | Murekiu Yimchunger | Shiponger | M | Peon | 12.03.1960 | 24.08.1988 | Under matric | Regular | 24.08.1988 | Tuensang | 31.03.2020 | IS-4400-17200 | 1800 | 28049 |
| 112 | Hampu Yimchunger | Kiutsukiur | M | Chowkidar-cum Sweeper | 14.05.1968 | 26.02.2010 | Under matric | Regular | 26.02.2010 | Tuensang | 31.05.2028 | IS-4400-17200 | 1300 | 19458 |
| 113 | Erangnimbe Thou | K.Zeliang | M | District Evaluation Officer | 25.10.1964 | 14.09.1990 | BA | Regular | 13.11.2014 | Peren | 31.10.2024 | PB-2-9300-34800 | 5400 | 62473 |
| 114 | Khehoshe Shohe | Khakiye Shohe | M | Evaluation Inspector | 17.12.1965 | 11.11.1987 | PU | Regular | 29.01.1999 | Peren | 31.11.2022 | PB-1-5200-20200 | 2800 | 45485 |
| 115 | Azuipei Lungalang | A.K.Lungalang | F | Sub-Inspector | 27.09.1982 | 17.12.2013 | BA | Contract | 17.12.2013 | Peren | 30.09.2042 | PB-1-5200-20200 | 2000 | 21454 |
| 116 | Sekhozo Kezo | Theruchu Kezo | M | LDA | 04.11.1983 | 16.12.2013 | BA | Regular | 16.12.2013 | Peren | 30.11.2043 | PB-1-5200-20200 | 1900 | 20462 |
| 117 | Raigong | Liaban | M | Peon | 12.03.1979 | 01.03.2013 | Under matric | Regular | 01.03.2013 | Peren | 31.03.2039 | IS-4400-17200 | 1400 | 16929 |
| 118 | Ipeidang Hega | Hingchuleung | M | Driver | 18.12.1977 | 01.10.2011 | Under matric | Contingency | 01.10.2011 | Peren | 30.09.2037 | Fixed | 4050 | 4050 |
| 119 | A.Anden Moklong | Akai | M | District Evaluation Officer | 01.02.1968 | 04.08.1988 | BA | Regular | 02.08.2012 | Longleng | 31.08.2023 | PB-2-9300-34800 | 5400 | 64312 |

MANUAL-XI

NON-PLAN

The Budget allocated to each of its agency, indicating the particulars of all plans, proposed expenditure and reports on disbursements made.

DDO-WISE SUB-ALLOTMENT OF FUNDS FOR THE YEAR 2016-17 IN RESPECT OF DEMAND NO.44. EVALUATION DEPARTMENT.

(Rs. In lakhs)

| Sl no | Name of the DDO | Name of Treasury/sub-treasury | SUB-ALLOTMENT OF FUND | | | | | | | | | | | | | | | Grand Total (9+18) |
|-------|--------------------|-------------------------------|-------------------------------------|-------------|-----------------------|----------------|--------------------|----------------|-----------------|-------------------------------------|---------------------|-----------------|-------------|-----------------------------------|-----------------------|--------|--------------------------|--------------------|
| | | | Provision for DA/DL is not required | | | | | | | Provision for DA/DL is not required | | | | | | | | |
| | | | Salaries | Wages | Scholarship / Stipend | Travel expense | Rent, Rate & Taxes | Total (4 to 8) | Office Expenses | Motor Vehicles | Repairs/Maintenance | Computerization | Trainning | Grant-in aid/contribution/Subsidy | Printing /Publication | Others | Total for issue of DA/DL | |
| 4 | 5 | 6 | 7 | 8 | 9 | 10 | 11 | 12 | 13 | 14 | 15 | 16 | 17 | 18 | 19 | | | |
| 1 | Shri.Shinito Sema | South T.O. Kohima | 201.93 | 4.27 | | 12.00 | 4.00 | 222.20 | 30.00 | 20.62 | 70.00 | 5.00 | 5.00 | | 35.00 | | 387.82 | |
| 1 | Shri.Veshietso | North T.O. Kohima | 35.60 | 0.50 | | | | 36.10 | | | | | | | | | 36.10 | |
| 2 | Smti.Watisangla | MKG T.O | 32.50 | 0.50 | | | | 33.00 | | | | | | | | | 33.00 | |
| 3 | Shri.Etssorhomo | Wokha T.O | 31.50 | - | | | | 31.50 | | | | | | | | | 31.50 | |
| 4 | Shri.H.R.Epao | Dmp T.O | 38.00 | | | | | 38.00 | | | | | | | | | 38.00 | |
| 5. | Shri.Sepozo Phesao | Mon T.O | 30.50 | | | | | 30.50 | | | | | | | | | 30.50 | |
| 6 | Shri.G.Hekuto | Zbto T.O | 25.80 | 0.50 | | | | 26.30 | | | | | | | | | 26.30 | |
| 7 | ShriPaunamheing | Phek T.O | 30.70 | 0.50 | | | | 31.20 | | | | | | | | | 31.20 | |
| 8 | Shri.Shellem | Tuensang T.O | 33.00 | - | | | | 33.00 | | | | | | | | | 33.00 | |
| 0 | Shri.Erangnimbe | Peren T.O | 19.50 | 0.50 | | | | 20.00 | | | | | | | | | 20.00 | |
| 10 | Shri.Renchamo | Kiphire T.O | 24.00 | - | | | | 24.00 | | | | | | | | | 24.00 | |
| 11. | Shri.Anden Moklong | Longleng T.O | 21.00 | 0.50 | | | | 21.50 | | | | | | | | | 21.50 | |
| | Total | | 524.03 | 7.27 | | 12.00 | 4.00 | 547.30 | 30.00 | 20.62 | 70.00 | 5.00 | 5.00 | | 35.00 | | 712.92 | |

MANUAL-XII

THE MANNER OF EXECUTION OF SUBSIDY PROGRAMME, INCLUDING THE AMOUNTS ALLOCATED AND THE DETAILS OF BENEFICIARIES OF SUCH PROGRAMS. (Section 4 (1) (b) (xii) of Right to Information Act,2005).

The Evaluation department does not implement any such programme.

MANUAL-XIII.

THE PARTICULARS OF RECIPIENTS OF CONCESSIONS, PERMITS OR AUTHORISATION GRANTED BY IT. (Section 4 (1) (b) (xiii) of Right to Information Act, 2005)

NIL

MANUAL-XIV.

THE DETAILS IN RESPECT OF THE INFORMATION, AVAILABLE TO OR HELD BY IT, REDUCE IN AN ELECTRONIC FORM.(Section 4 (1)(b)(viv) of Right to Information Act,2005)

The Directorate uploaded the information /details of the establishment on Website <http://www.nagaeval.nic.in>.

MANUAL-XV.

THE PARTICULARS OF FACILITIES AVAILABLE TO CITIZENS FOR OBTAINING INFORMATION, INCLUDING THE WORKING HOURS OF A LIBRARY OR READING ROOM, IF MAINTAINED FOR PUBLIC USE. SECTION 4(I)(B)(XV) OF RIGHT TO INFORMATION ACT, 2005.

1. Directorate of Evaluation below A.G. Office, Kohima, Nagaland.
2. Website/Notice board/Advertisement.
3. Working hour of the faculty from 9:30 AM to 4:30 PM.
4. E-Mail ID- Direvl_ngl@nic.in.

MANUAL-XVI.

THE NAMES AND DESIGNATION AND OTHER PARTICULARS OF THE PUBLIC INFORMATION OFFICER.(Section 4 (1)(b)(xvi) of Right to Information Act,2005).

In pursuance to P & AR NO-3/GEN-147/2005 dated 04-10-2006 on the Right to Information Act 2005 the Appellate Authority, the PIOs and APIOs in respect of the Evaluation Directorate and the District Evaluation Offices as on 01-03-2017 is given below:

| | | Name and Designation of the designated Officer | Contact No. |
|----------------------------|---------------------------|---|--------------------|
| APPELLATE AUTHORITY | | Smt.Kevileno Angami, Ex- officio Director | 9436063516 |
| DIRECTORATE LEVEL | | | |
| 1 | Directorate of Evaluation | Public Information Officer Shri.Shinito Sema, Additional Director | 9436243219 |
| 2 | | Assistant Public Information Officer: Joint Director, Shri.Hugie Zeliang | 9436076868 |
| DISTRICT LEVEL | | | |
| 1 | Kohima District | PIO District Evaluation Officer Shri.Veshietso Kotso | 9436810664 |
| 2 | | APIO Inspector Smti.Nukshijungla | 9856535347 |
| 1 | Zunheboto District | PIO District Evaluation Officer Shri.G.Hekuto Sema | 9436010902 |
| 2 | | APIO Inspector Shri.Sukheamew Yimchunger | 9436000968 |
| 1 | Mokokchung District | PIO District Evaluation Officer Smti.Watisangla | 8974324527 |
| 2 | | APIO Inspector Shri.Imkongmeren | 9856511066 |
| 1 | Phek District | PIO District Evaluation Officer Shri.Paunamheing | 9436000968 |
| 2 | | APIO Inspector Shri. Zulhunu | 9402820720 |
| 1 | Wokha District | PIO District Evaluation Officer Shri. Etssorhomo Lotha | 9436400539 |
| 2 | | APIO Inspector Shri.Namti Newmai | 9612927387 |
| 1 | Tuensang District | PIO District Evaluation Officer Shri.Shellem | |
| 2 | | APIO Inspector Y.Tsathrongse | 9612605482 |
| 1 | Mon District | PIO Inspector Shri.Sepozo | |
| 2 | | APIO Inspector Shri.Shenwang Konyak | 9612669522 |
| 1 | Dimapur District | PIO District Evaluation Officer Shri. H.R Epao | 9436063974 |
| 2 | | APIO Inspector Smti.Setsovinuo Solo | 9436001683 |
| 1 | Kiphire District | PIO District Evaluation Officer Shri.Renchamo Odyuo | 9862134939 |
| 2 | | APIO Inspector Shri.Khoheshe Jakha | 9402434360 |
| 1 | Longleng District | PIO District Evaluation Officer Shri.Anden Moklong | 8415069031 |
| 2 | | APIO Inspector Shri.Temsuyanger Longkumer | 9863459034 |
| 1 | Peren District | PIO District Evaluation Officer Shri.Erangnimbe Thou | 9612257151 |
| 2 | | APIO Inspector Shri.Khehoshe Shohe | 9436267151 |

MANUAL XVII.

SUCH OTHER INFORMATION AS MAY BE PRESCRIBED: SECTION 4(I)(B)(XVII) OF RIGHT TO INFORMATION ACT, 2005.

1.CITIZEN'S CHARTER OF THE PUBLIC AUTHORITY.

Not Applicable.

2. GRIEVANCE REDRESSAL MECHANISM

Not Applicable.

3. DETAILS OF APPLICATION RECEIVED AND RESPONSES GIVEN UNDER RTI ACT, 2005.

Received one (1) and furnished one (1)

4. LIST OF COMPLETED SCHEMES/PROJECTS/PROGRAMMES.

Not Applicable.

5. LIST OF ALL CONTRACT ENTERED INTO INCLUDING NAME OF THE CONTRACTOR, AMOUNT OF CONTRACT AND PERIOD OF COMPLETION OF CONTRACT.

- (i). Construction of retaining wall for Directorate office building has completed and construction of New Directorate office building near the Nagaland Civil Secretariat is initiated under Special Plan Assistant (Name of Contractor –M/S Oriental Agency, Work order NO.E.E/PLN-54/2013 dated 6th February 2015. Amount- Rs.4,98,53000.00. Work in progress.
- (ii). Construction of staff quarters at Mokokchung under Negotiated Loan (HUDCO) completed. Name of contractor, M/S.M Toshi Jamir Regd No.NPW/C1-1/207. Work order NO.CE(H)/TB/EVL/MKG/2011 dated 2nd June 2015.Amount Rs.75.91 Lakhs.
- (iii). Construction of District Evaluation Office Building at Longleng completed, under Special Plan Assistance. Name of Contractor- M/S.Limakum Phom Redg No.NPW/Class-1/937. Work order NO.EE/H-1/TB/TEN/EVL/2014-15 dated 22nd May 2015. Amount Rs.72.76. Lakhs.
- (iv). Construction of District Evaluation Office Building at Tuensang nearing completion under Special Plan Assistance. Name of Contractor: M/S. K.Venuh, Redg No.Class-1/506. Work order No. EE/H-1/TB/TEN/EVL/2016-17 dated 22nd May 2015. Amount Rs.46,58,752/-
- (v). Proposal for construction of flat type staff quarter to be initiated and allotment under process.
- (vi). Construction of flat type staff quarter at Dimapur under negotiated (HUDCO) initiated. Name of the contractor: M/S.T.Zintso and sons, Redg No.N.P.W. Class-1/908 Work order No.EE/H-1/TB/TEN/EVL/2016-17 dated 12th January 2017Amounting to Rs.82.00. Lakhs.

FORMAT FOR FURNISHING INFORMATION ON APPLICATIONS RECEIVED AT VARIOUS LEVELS BY PIOs UNDER THE RTI ACT, 2005

Department/Public Authority: Evaluation

Period from 1st April, 2015 to 31st March, 2016

| Sl. No | Public Authority | Received | Received from outside the State | Furnished | Rejected / Denied | Transferred/ Re-directed | | Under Process | Withdrawn by applicant | Not Collected by applicant | First Appeal | | Second appeal | (Amount in Rs) | | | Applicants | | | |
|--------|-------------------|----------|---------------------------------|-----------|-------------------|--------------------------|------|---------------|------------------------|----------------------------|--------------|----------|---------------|----------------|------|---------|------------|--------|-----|--|
| | | | | | | To | From | | | | Received | Disposed | | Fees | Cost | Penalty | Male | Female | BPL | |
| A | Secretariat Level | | | | | | | | | | | | | | | | | | | |
| B | Directorate Level | | | | | | | | | | | | | | | | | | | |
| C | Districts Level | | | | | | | | | | | | | | | | | | | |
| 1 | Kohima | | | | | | | | | | | | | | | | | | | |
| 2 | Dimapur | | | | | | | | | | | | | | | | | | | |
| 3 | Mokokchung | | | | | | | | | | | | | | | | | | | |
| 4 | Wokha | | | | | | | | | | | | | | | | | | | |
| 5 | Zunheboto | | | | | | | | | | | | | | | | | | | |
| 6 | Phek | | | | | | | | | | | | | | | | | | | |
| 7 | Tuensang | | | | | | | | | | | | | | | | | | | |
| 8 | Mon | | | | | | | | | | | | | | | | | | | |
| 9 | Kiphire | | | | | | | | | | | | | | | | | | | |
| 10 | Longleng | | | | | | | | | | | | | | | | | | | |
| 11 | Peren | | | | | | | | | | | | | | | | | | | |
| 12 | Others/ Units | | | | | | | | | | | | | | | | | | | |
| | Total | | | | | | | | | | | | | | | | | | | |

NIL

Name, Signature and Seal of the Administrative Head of Department/Public Authority

